

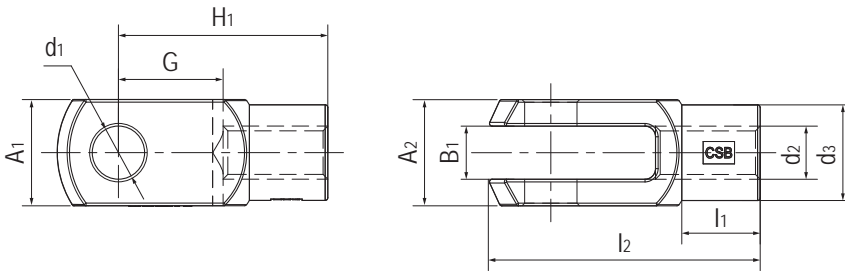
标准U型夹 Standard Clevis Joints



产品特性 Product features

- 材料CSB®M163
 - 高强度
 - 耐腐蚀抗灰尘
 - 降低噪音
 - 轻量化设计
 - 可与塑料关节轴承组合使用
- Material CSB®M163
 - High tensile force
 - Absolute corrosion-resistant
 - Noise free
 - Very lightweight
 - Can be used in combination with plastic rod ends

标准规格 Standard specifications



产品编码 Part No.:

GCR-10F

- 细牙螺纹 Fine thread
- 内径 Inner diameter
- R: 右旋 Right
- L: 左旋 Left

产品编码 Part No.	d ₁ [mm]	d ₂ [mm]	d ₃ [mm]	G [mm]	A ₁ [mm]	A ₂ [mm]	B ₁ [mm]	l ₁ [mm]	l ₂ [mm]	H ₁ [mm]	最大静态抗拉强度 Max. static tensile strength		最大径向静态负荷 Max. radial static load		最大扭矩 Max. tightening torque [Nm]	重量 Weight [g]
											短期 Short-term [N]	长期 Long-term [N]	短期 Short-term [N]	长期 Long-term [N]		
GCR-06	6	M6	Φ10	12	12	12	6	9	31	24	1400	700	300	150	1.5	2.5
GCR-08	8	M8	Φ14	16	16	16	8	12	42	32	2700	1350	650	325	5	6.3
GCR-10	10	M10	Φ18	20	20	20	10	15	52	40	4700	2350	800	400	15	13.2
GCR-12	12	M12	Φ20	24	24	24	12	18	61.3	48	5700	2850	900	450	20	20.3
GCR-10F	10	M10*1.25	Φ18	20	20	20	10	15	51.3	40	4700	2350	800	400	6	13.2
GCR-12F	12	M12*1.25	Φ20	24	24	24	12	18	61.3	48	5700	2850	900	450	15	20.3
GCL-06	6	M6	Φ10	12	12	12	6	9	31	24	1400	700	300	150	1.5	2.5
GCL-08	8	M8	Φ14	16	16	16	8	12	42	32	2700	1350	650	325	5	6.3
GCL-10	10	M10	Φ18	20	20	20	10	15	52	40	4700	2350	800	400	15	13.2
GCL-12	12	M12	Φ20	24	24	24	12	18	61.3	48	5700	2850	900	450	20	20.3
GCL-10F	10	M10*1.25	Φ18	20	20	20	10	15	51.3	40	4700	2350	800	400	6	13.2
GCL-12F	12	M12*1.25	Φ20	24	24	24	12	18	61.3	48	5700	2850	900	450	15	20.3

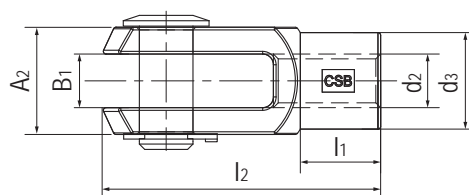
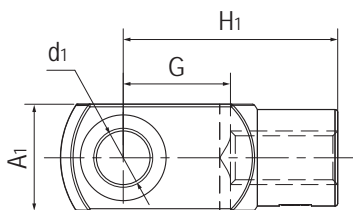
组合U型夹 Clevis Joints with pin and circlip



产品特性 Product features

- 材料CSB®M163
 - 高强度
 - 耐腐蚀抗灰尘
 - 降低噪音
 - 轻量化设计
 - 带有不锈钢插销与卡簧
 - 可与塑料关节轴承组合使用
- Material CSB®M163
 - High tensile force
 - Absolute corrosion-resistant
 - Noise free
 - Very lightweight
 - With pin and circlip
 - Can be used in combination with plastic rod ends

标准规格 Standard specifications



产品编码 Part No.:

GCRE-10F

- 细牙螺纹 Fine thread
- 内径 Inner diameter
- 不锈钢 Stainless steel
- R: 右旋 Right
- L: 左旋 Left

产品编码 Part No.	d ₁ [mm]	d ₂ [mm]	d ₃ [mm]	G [mm]	A ₁ [mm]	A ₂ [mm]	B ₁ [mm]	l ₁ [mm]	l ₂ [mm]	H ₁ [mm]	最大静态抗拉强度 Max. static tensile strength		最大径向静态负荷 Max. radial static load		最大扭矩 Max. tightening torque [Nm]	重量 Weight [g]
											短期 Short-term [N]	长期 Long-term [N]	短期 Short-term [N]	长期 Long-term [N]		
GCRE-06	6	M6	Φ10	12	12	12	6	9	31	24	1400	700	300	150	1.5	7.2
GCRE-08	8	M8	Φ14	16	16	16	8	12	42	32	2700	1350	650	325	5	16.7
GCRE-10	10	M10	Φ18	20	20	20	10	15	52	40	4700	2350	800	400	15	33.1
GCRE-12	12	M12	Φ20	24	24	24	12	18	61.3	48	5700	2850	900	450	20	52.4
GCRE-10F	10	M10*1.25	Φ18	20	20	20	10	15	51.3	40	4700	2350	800	400	6	33.1
GCRE-12F	12	M12*1.25	Φ20	24	24	24	12	18	61.3	48	5700	2850	900	450	15	52.4
GCLE-06	6	M6	Φ10	12	12	12	6	9	31	24	1400	700	300	150	1.5	7.2
GCLE-08	8	M8	Φ14	16	16	16	8	12	42	32	2700	1350	650	325	5	16.7
GCLE-10	10	M10	Φ18	20	20	20	10	15	52	40	4700	2350	800	400	15	33.1
GCLE-12	12	M12	Φ20	24	24	24	12	18	61.3	48	5700	2850	900	450	20	52.4
GCLE-10F	10	M10*1.25	Φ18	20	20	20	10	15	51.3	40	4700	2350	800	400	6	33.1
GCLE-12F	12	M12*1.25	Φ20	24	24	24	12	18	61.3	48	5700	2850	900	450	15	52.4